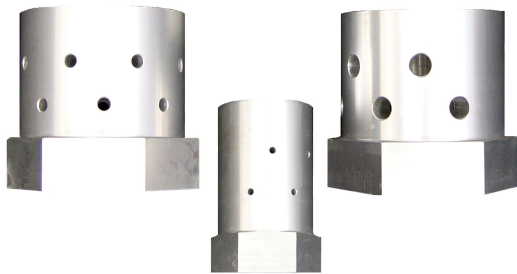


SEVO[®] 1230 Nozzles

3M[™] Novec[™] 1230 Fire Protection Fluid

ENGINEER AND ARCHITECT SPECIFICATIONS



FEATURES

½, 1, 1 ½, 2 Inch sizes

180° and 360° Discharge options

High flow rate

Large area distribution coverage

DESCRIPTION

The Sevo[®] 1230 system nozzles are designated to provide rapid and thorough vaporization and distribution of agent with the air in the protected space. Standard nozzles are made of aluminum. Pre-engineered system nozzles are made in three pipe sizes, 1", 1 ½", and 2".

Hydraulically calculated nozzles are available in ¼", 3/8", ½", ¾", 1", 1 ¼", 1 ½", and 2" with a selection of orifices designed to provide the proper flow rate and distribution of agent to flood a hazard area. The 180° nozzle is engineered to provide a 160° drill pattern to prevent dissipation on wall surfaces for installations where the nozzles are located in center of hazard.

ARCHITECT / ENGINEERING SPECIFICATION

Each nozzle has a standard female pipe thread for attachment to discharge piping. Nozzle shall be spaced in accordance with the instruction in the pre-engineered system design manual as required UL Listing or FM Approval. Each nozzle shall be marked with the Sevo[®] Systems part number.

The maximum nozzle height per layer of coverage is 14 ft (42.7 meters). Nozzles should be placed at least 5" below the ceiling surfaces. 180° nozzles have a straight discharge pattern to allow placement along a wall from 7' AFF to 5" below the ceiling. Both 180° and 360° nozzles were tested for a maximum area coverage using a 32' wide by 32' long enclosure.