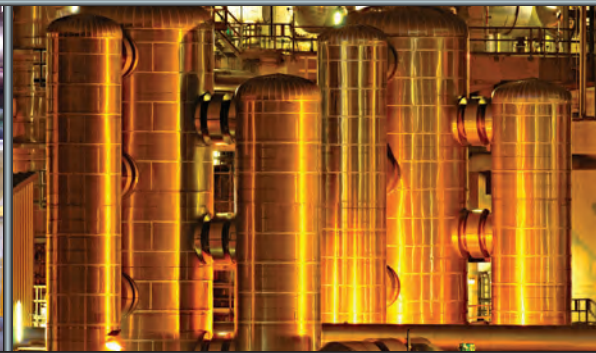


**EXPLOSION VENTING
SOLUTIONS**

INNOVATIVE, PROVEN,

COST-EFFECTIVE

TECHNOLOGY





Fike is the leader in delivering patented, innovative technologies to the explosion protection market. With over 65 years of field experience, Fike understands the complexities of plant processes, relevant code compliance and the critical nature of continued plant operation. The culmination of this expertise is Fike's line of explosion protection products – technology designed to help you achieve your safety goals AND keep you in compliance with the quickly changing codes, standards and regulations associated with the explosion protection industry. Fike is a leader in the development of effective, cost efficient, ATEX certified explosion venting solutions.

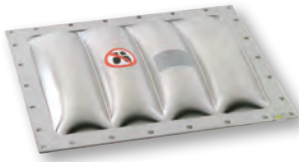
Proven to be one of the most effective forms of passive explosion protection, explosion venting provides overpressure protection from potential deflagration hazards by providing a planned pathway for the expanding gases to escape. Economically priced and offering a long service life, Fike's wide range of explosion venting solutions are ideal for many applications.

				PERFORMANCE ATTRIBUTES						COMPLIANCE	
				Operating Ratio	Operating Temperature	Vacuum Rating	Non-Fragmenting	Pulsating / Cycle	Sanitary		
SHAPE	TYPE	MODEL	DESIGN	BURST PRESSURE							
		SQUARE / RECTANGLE	BULGED	Vmax™	Single element	0.5 - 5.0 PSIG 103 - 345 MBARG 0.1 - 0.35 KG/CM ²	80%	0 - 350°F -17 - 175°C	⇨⇨	•	●●●
Sani-VS	Single element Integrated frame			0.3 - 10.2 PSIG 21 - 703 MBARG 0.02 - 0.7 KG/CM ²	80%	-40 - 460°F -40 - 240°C	⇨⇨	•	●●●	•	NFPA 68 ATEX / CE
Sani-VSA	Single element Integrated frame			0.3 - 10.2 PSIG 21 - 703 MBARG 0.02 - 0.7 KG/CM ²	80%	-40 - 230°F -40 - 110°C	⇨⇨	•	●●●	•	NFPA 68 ATEX / CE 3-A
CV-SI	Composite			0.7 - 7.3 PSIG 50 - 500 MBARG 0.05 - 0.5 KG/CM ²	70%	-40 - 842°F -40 - 450°C	⇨⇨⇨	•	●●○		NFPA 68 ATEX / CE
CV-SI-HT	Composite			0.7 - 7.3 PSIG 50 - 500 MBARG 0.05 - 0.5 KG/CM ²	70%	-40 - 1112°F -40 - 600°C	⇨⇨⇨	•	●●○		NFPA 68 ATEX / CE
FLAT	CV-CF		Composite	0.75 - 10.0 PSIG 52 - 690 MBARG 0.05 - 0.7 KG/CM ²	60 - 75%	-40 - 250°F -40 - 120°C	⇨⇨	•	●●●		NFPA 68 ATEX / CE
	CV-SF		Composite	0.5 - 10.0 PSIG 35 - 690 MBARG 0.04 - 0.7 KG/CM ²	60 - 75%	-40 - 500°F -40 - 260°C	⇨⇨⇨	•	●●○		NFPA 68
	CV-H		Composite	0.5 - 10.0 PSIG 35 - 690 MBARG 0.04 - 0.7 KG/CM ²	60 - 75%	-40 - 500°F -40 - 260°C		•	●●○	•	NFPA 68
	CV		Composite	0.5 - 10.0 PSIG 35 - 690 MBARG 0.04 - 0.7 KG/CM ²	60 - 75%	-40 - 500°F -40 - 260°C	⇨⇨	•	●●○		NFPA 68 ATEX / CE
	CV-I		Composite	0.5 - 10.0 PSIG 35 - 690 MBARG 0.04 - 0.7 KG/CM ²	60 - 75%	-40 - 800°F -40 - 425°C	⇨⇨	•	●●○		NFPA 68
	Sani-V®		Single element Integrated frame	0.5 - 6.5 PSIG 35 - 448 MBARG 0.04 - 0.5 KG/CM ²	50%	-40 - 460°F -40 - 240°C	⇨⇨	•	●●○	•	NFPA 68 ATEX / CE
	Sani-VA		Single element Integrated frame	0.5 - 6.5 PSIG 35 - 448 MBARG 0.04 - 0.5 KG/CM ²	50%	-40 - 230°F -40 - 110°C	⇨⇨	•	●●○	•	NFPA 68 ATEX / CE 3-A
	EleGuard™		Single element Integrated frame	0.7 - 2.9 PSIG 50 - 200 MBARG 0.05 - 0.2 KG/CM ²	25%	-4 - 140°F -20 - 60°C		•	●●○		NFPA 61 ATEX / CE
	Flex-V®		Composite Reclosing	1.23 - 1.81 PSIG 85 - 125 MBARG 0.09 - 0.127 KG/CM ²	50%	-4 - 140°F -20 - 60°C	⇨⇨⇨	•	●●○		NFPA 68 ATEX / CE
ROUND	BULGED	CV-S	Composite	1.0 - 15.0 PSIG 69 - 1030 MBARG 0.07 - 1.0 KG/CM ²	80 - 90%	-40 - 500°F -40 - 260°C	⇨⇨⇨	•*	●●●		NFPA 68 ATEX / CE
		CV-SI	Composite	1.0 - 14.9 PSIG 70 - 1030 MBARG 0.07 - 1.1 KG/CM ²	80%	-40 - 842°F -40 - 450°C	⇨⇨⇨	•	●●○		NFPA 68 ATEX / CE
		CV-SI-HT	Composite	1.0 - 14.9 PSIG 70 - 1030 MBARG 0.07 - 1.1 KG/CM ²	80%	-40 - 1112°F -40 - 600°C	⇨⇨⇨	•	●●○		NFPA 68 ATEX / CE
	FLAT	CV-CF	Composite	.75 - 15.0 PSIG 52 - 1030 MBARG 0.05 - 1.0 KG/CM ²	60 - 75%	-40 - 250°F -40 - 120°C	⇨⇨	•*	●●●		NFPA 68 ATEX / CE
		CV-H	Composite	0.5 - 15.0 PSIG 35 - 1030 MBARG 0.04 - 1.0 KG/CM ²	60 - 75%	-40 - 500°F -40 - 260°C		•	●●○		NFPA 68
		CV	Composite	0.5 - 15.0 PSIG 35 - 1030 MBARG 0.04 - 1.0 KG/CM ²	60 - 75%	-40 - 500°F -40 - 260°C	⇨⇨	•*	●●○	•	NFPA 68 ATEX / CE
		CV-I	Composite	0.5 - 15.0 PSIG 35 - 1030 MBARG 0.04 - 1.0 KG/CM ²	60 - 75%	-40 - 800°F -40 - 425°C	⇨⇨	•	●●○		NFPA 68

Vacuum Rating: ⇨⇨ Partial ⇨⇨⇨ Full Pulsating / Cycle: ●●○ Good ●●● Better ●●● Best
* Larger diameters may require the optional High Integrity model to prevent fragmentation. Please consult factory.

Explosion Vents - Sanitary

Sani-VS



- Integrated frame designed for bolt-on installation
- FDA compliant materials
- CIP / SIP
- Stock program*



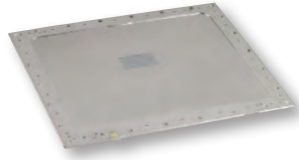
Sani-VSA



- Integrated frame designed for bolt-on installation
- FDA compliant materials
- Sanitary gasket
- 3-A and EHEDG Certified



Sani-V



- Single membrane, integrated frame for bolt-on installation
- FDA compliant materials
- CIP / SIP
- Stock program*



Sani-VA



- Single membrane, integrated frame for bolt-on installation
- FDA compliant materials
- Sanitary gasket
- 3-A and EHEDG Certified



CV-H



- Liner on process side supports applications in static environments
- Available in round and square / rectangular configurations



Explosion Vents

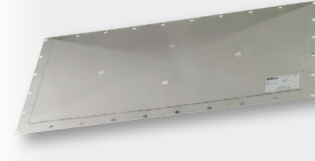
CV



- Long lasting service for static to light pressure cycling conditions
- Available in round and square / rectangular configurations
- Stock program*



CV-CF



- Extended service life under heavy pulsating and cycling process conditions
- Available in round and square / rectangular configurations



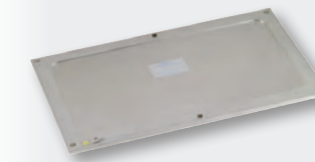
CV-I



- Insulation extends service life in high temperature applications
- Available in round and square / rectangular configurations



EleGuard



- Integrated frame designed for bolt-on installation
- Designed and priced to protect bucket elevators



Vmax



- Single membrane, multi-dome design offers extended service life
- Provides stable burst pressure ratings independent of temperature
- Stock program*



Vent Accessories

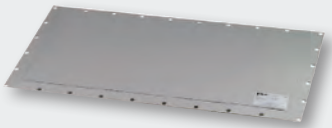
CV-S



- Optimal for full vacuum process conditions with some pulsating / cycling
- Stock program*



CV-SF



- Supports full vacuum conditions with use of backup bars in the frame assembly
- Available in round and square / rectangular configurations
- Stock program*



CV-SI



- Optimal for high temperature vacuum process conditions with some pulsating / cycling
- Available in round and square / rectangular configurations



Flex-V



- Recloses, recovering 90% of vent relief area, allowing more efficient use of fire fighting agents
- Reduces risk of secondary explosions
- Protection against vessel collapse due to vacuum pressure



HIGH INTEGRITY



- Special design prevents fragmentation even during the most violent explosions
- Flange alignment independent
- Available in CV, CV-S, and CV-CF round vents

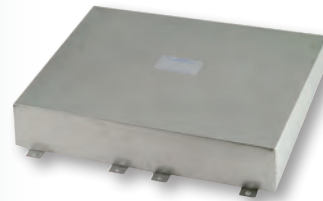
- High quality installation **FRAMES** are available in a variety of materials and designs.

- Easy plant-wide monitoring with **BURST INDICATORS**.



- An optional **ATMOSPHERIC INSULATION** pack is available to help avoid energy loss or condensation effects, and to reduce acoustic emission levels of protected systems.

- **PROTECTION WEATHER COVERS** are lightweight, corrosion resistant



environmental protection. Weather covers minimize the effect of dirt, wind, snow, etc., while safeguarding the operation of the explosion vent.

Vent Stocking Program

Explosion venting is one of the most common and effective forms of passive explosion protection for industrial equipment. Fike continues to lead the way by producing an unsurpassed range of reliable and tested explosion venting solutions. With Fike's Stock Vent program, you have the added advantages of quick turnaround and reduced costs. Vents will be shipped within 48 hours, at a price less than a custom vent!

TIME IS MONEY – AND YOU SAVE BOTH WITH FIKE'S GLOBAL STOCK EXPLOSION VENT PROGRAM

**Stock program varies by market*

Flameless Explosion Venting

During normal venting, an explosion is freely discharged, allowing flames and dust to exit the process vessel being protected. When the process vessel is located indoors, ducts are generally used to safely convey the explosion outside the building. However, ductwork has disadvantages and may result in decreased venting efficiency. Flameless venting, in combination with Fike explosion vents, can extinguish the flame from the vented explosion without the use of expensive ducting, limitations to equipment location, or more costly explosion protection.



- Eliminates need for expensive ducts
- Enhanced venting efficiency over venting with ductwork
- Virtually maintenance free

Highly suited for indoor applications, flameless venting is designed to protect people and equipment from flames and dust, releasing post-combustion gases only.



FlamQuench II™

- For use with round vents
- Field refurbish kits available
- FM/CE Approved



FlamQuench SQ

- For use with rectangular vents
- Field refurbish kits available
- CE Approved



EleQuench™

- For use with EleGuard explosion vents
- CE Approved

Testing Services

Every application, process and facility is unique and requires a complete assessment to determine what needs to be protected and the most effective means for accomplishing the safety goals. Fike offers a wide range of both standard and non-standard explosibility tests designed to assist companies in identifying and mitigating costly explosion hazards — all completed at Fike's own state-of-the-art testing laboratories.

Contact Fike for a hazard evaluation.

Fike offers full-scale explosion testing

- Define the characteristics of an explosion in your plant
- Identify vulnerable process areas
- Design prevention and protection safety measures



CONTACT FIKE

Fike is a global team of experienced professionals dedicated to life and business safety. We work closely with our clients to solve highly complex problems with easy-to-use products and services.



FIKE GLOBAL MANUFACTURING, SALES AND SERVICE

AMERICAS

FIKE CORPORATION
Blue Springs, MO, USA
Tel: +1-816-229-3405
Email: fpssales@fike.com

FIKE CANADA
Burlington, Canada
Tel: +1-905-681-3100
Email: fikecanada@fike.com

FIKE LATINA LTD (MERCOSUR)
Jundiai, Brazil
Tel: +55-11-4525-5900
Email: vendas@fike.com.br

CARIBBEAN, CENTRAL, SOUTH AMERICA
Houston, TX, USA
Tel: +1-281-895-8342
Email: ccsasales@fike.com

ASIA

FIKE ASIA PACIFIC SDN BHD
Selangor Darul Ehsan, Malaysia
Tel: +60-3-7859-1462
Email: fikeap@fike.com

FIKE JAPAN
Tokyo, Japan
Tel: +81-335-951-291
Email: office@fikejapan.co.jp

FIKE INDIA PVT. LTD.
Pune, India
Tel: +91-20-2439-1947
Email: sameerp@pn2.vsnl.net.in

EUROPE

FIKE EUROPE
Herentals, Belgium
Tel: +32-14-210031
Email: fike-europe@fike.com

FIKE UNITED KINGDOM
Maidstone, Kent, United Kingdom
Tel: +44-1-622-677081
Email: sales@fike.co.uk

FIKE FRANCE
Cergy Pontoise Cedex, France
Tel: +33-1-30-31-31-32
Email: contact@fike.fr

FIKE DEUTSCHLAND
Mannheim, Germany
Tel: +49-621-321-67-0
Email: info@fike.de

FIKE ITALIA
Milano, Italy
Tel: +39-02-2952-4166
Email: webmaster@fike.it

FIKE IBERICA
Barcelona, Spain
Tel: +34-93-6000-800
Email: fike@fike.es

MIDDLE EAST

FIKE MIDDLE EAST SPC
Kingdom of Bahrain
Tel: +973-1758-3285
Email: sales@fike.com.bh



Sani-V, EleGuard, Flex-V, Vmax, FlamQuench, EleQuench, Fike and Fike Corporation are trademarks or registered trademarks of Fike Corporation. All other trademarks, trade names or company names referenced herein are the property of their respective owners.

U.S. Patents including 4,662,126; 4,821,909; 6,070,365; 6,959,828; 7,017,767; 7,234,278; 5,105,370; 5,105,371; 5,107,446; 5,138,562; 5,199,500; 5,647,438; 5,718,294; 5,816,330; 6,031,462; 6,131,594; 6,540,029
Additional foreign patents and U.S. patents pending.



WWW.FIKE.COM