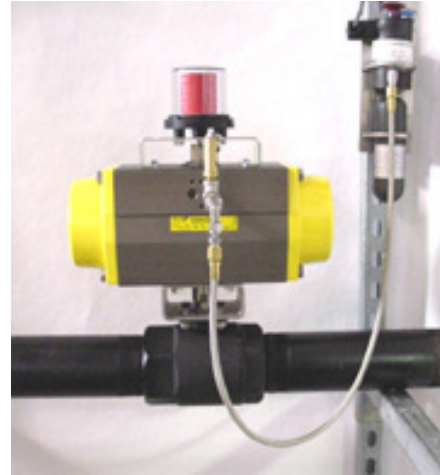


Clean Agent Suppression Systems



Purpose

Selector valves allow a single agent supply to be utilized for protection of multiple hazards, reducing the total amount of agent required.

Application

Selector Valves are used to direct the flow of agent (Clean Agent(s) or Carbon Dioxide) into one specific hazard of a multiple hazard application.

Description

The selector valve body is available in either carbon steel or stainless steel. The valve is a ball valve that blocks the flow of agent through the piping network until the valve is activated. Valve actuation is accomplished by two methods:

- √ Manual
- √ Electric

Manual actuation is accomplished by removing a ring pin and pushing a manual actuation button down. Electric actuation is accomplished when an electrical signal is received by the 24V DC electric solenoid. Both of these actuation methods result in the opening of a nitrogen cartridge that pneumatically opens the selector valve. Each selector valve is equipped with valve position monitor that gives a visual indication if the valve is open or closed.

A typical selector valve assembly is made-up of the following items:

- √ Selector valve with Actuator and relief /pop-off valve
- √ Solenoid Actuator Kit
- √ ¼" check valve and ¼"-90 Degree Elbow
- √ ¼" SST Flexible Hose x 3'-0 Ig.

Selector valves are available in 1", 1 ½", 2" & 3" with NPT threads. Reducing bushings can be utilized when connecting to a ½", ¾", 1¼" and 2½" piping network. For details on the Solenoid Actuator Kit refer to Catalog Sheet Number C.1.39.01.

Installation

The Selector Valve is installed in the supply piping for the hazard being protected.

Depending on the size of the selector valve, the valve has either threaded or flanged ends. These valves can be mounted in either the horizontal or vertical position. All the necessary parts are provided to install the solenoid actuator within 3 feet (0.9 m) from the selector valve. The solenoid actuator can be located up to 42 feet (13.0 m) from the selector valve

Approvals

Factory Mutual Approval

December, 2003
Revised Issue

Part Number Information

Part No.	Description	Mounting Type
70-1899-10-XX	Selector Valve-1"	1" (25 mm) NPT Female
70-1899-15-XX	Selector Valve-1½"	1½" (40 mm) NPT Female
70-1899-20-XX	Selector Valve-2"	2" (50 mm) NPT Female
70-1899-30-XX	Selector Valve-3"	3" (80 mm) NPT Female

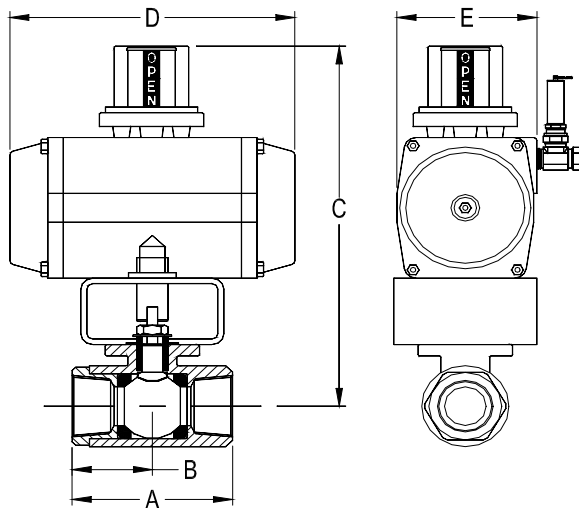
Ordering Options

70-XXXX- XX- XX
A B CD

Where:

- A = 1899 - Threaded Selector Valve
 B = 10 - 1"
 15 - 1 1/2"
 20 - 2"
 30 - 3"
 C = C - Carbon Steel Selector Valve Body
 S - Stainless Steel Selector Valve Body
 D = D - DOT Nitrogen Cylinder
 N - Non-DOT Nitrogen Cylinder

Dimensional Information



Part Number	Size	Type	A	B	C (inches)	D	E	F
70-1899-10	1" (25 mm)	Threaded	3.37	1.68	TBD	7.95	3.34	n/a
70-1899-15	1½" (40 mm)	Threaded	4.37	2.18	TBD	9.05	3.85	n/a
70-1899-20	2" (50 mm)	Threaded	5.50	2.75	TBD	10.66	4.33	n/a
70-1899-30	3" (80 mm)	Threaded	6.75	3.37	TBD	14.17	5.51	n/a