

CO₂ CYLINDER RACK ASSEMBLY SINGLE ROW

DESCRIPTION

Cylinder Rack Assemblies are designed to rigidly support CO₂ cylinders on multiple or main/reserve cylinder applications.

Single Row Cylinder Rack Assemblies with weigh rail are available in 2,3,4, 5 and 6 cylinder configurations. For applications with more than 6 cylinders, "Add-on" Cylinder Rack Assemblies are available in the same 2 through 6 cylinder configurations. This will allow any combination of cylinders to be housed in a single row rack arrangement.

All cylinders are mounted on 12" centers. Maximum height of rack: 86". See rack assembly dimensions on back page.

SPECIFICATIONS

Rack:	Steel Unistrut construction with galvanized finish
Mounting Hardware:	Steel with galvanized finish
Fasteners:	Plated finish
Marine:	All marine material is stainless steel

APPROVALS

- USCG - 162.038/12/0

ORDERING INFORMATION

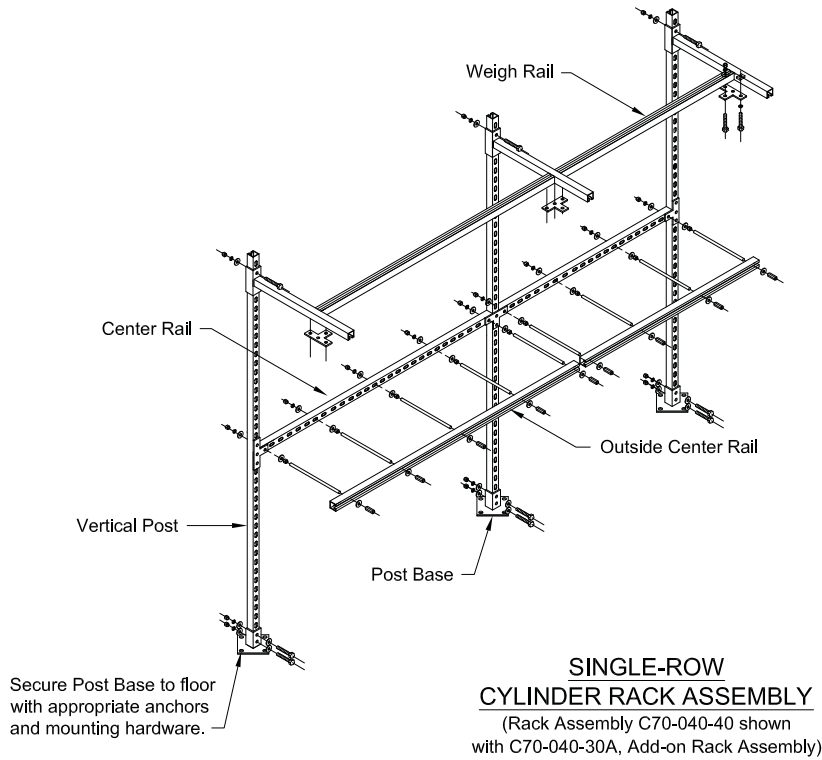
CO ₂ Part Number	Basic Rack Assembly
C70-040-20	2 Cylinder
C70-040-30	3 Cylinder
C70-040-40	4 Cylinder
C70-040-50	5 Cylinder
C70-040-60	6 Cylinder
CO ₂ Part Number	Add-on Rack Assembly
C70-040-20A	2 Cylinder
C70-040-30A	3 Cylinder
C70-040-40A	4 Cylinder
C70-040-50A	5 Cylinder
C70-040-60A	6 Cylinder

Marine Part Number	Basic Rack Assembly
C70-040-20-N	2 Cylinder
C70-040-30-N	3 Cylinder
C70-040-40-N	4 Cylinder
C70-040-50-N	5 Cylinder
C70-040-60-N	6 Cylinder
Part Number	Add-on Rack Assembly
C70-040-20A-N	2 Cylinder
C70-040-30A-N	3 Cylinder
C70-040-40A-N	4 Cylinder
C70-040-50A-N	5 Cylinder
C70-040-60A-N	6 Cylinder

Form No. E.1.19.01-2

CYLINDER RACKING ASSEMBLY

The figure and table below illustrate the vertical height at which the center/front rails and weigh rails should be located.



Recommended Cylinder Rack Mounting Dimensions		
Cylinder Size	Dimension "A"	Dimension "B"
50 lb. (22.7 kg)	67 1/2" (1716 mm)	33" (838 mm)
75 lb. (34.0 kg)	72 1/2" (1842 mm)	38 1/2" (978 mm)
100 lb. (45.4 kg)	74 1/2" (1892 mm)	43" (1092 mm)

