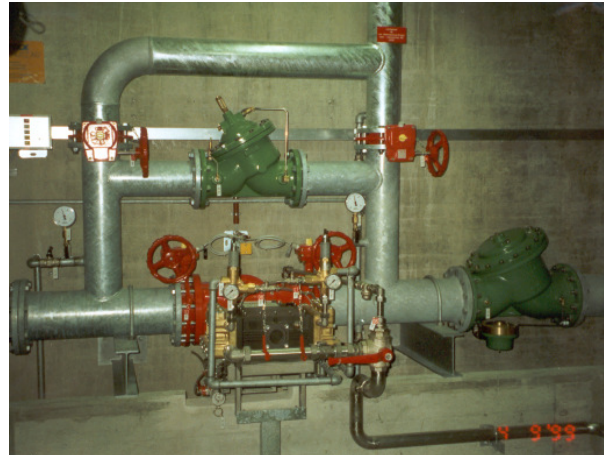


Effective Fire-fighting with our *FireDos*[®]

FireDos[®] is a solely mechanical mixing system for dosing all common liquid fire-fighting agents – especially all foam agents. Chemicals which can be dosed include alcohol-resistant foam agents, all film-forming foam agents, multi-range foam agents, protein-based foam agents and even “Class-A”-foam agents or wetting agents. In addition *FireDos*[®] can be used to dose fire-fighting gels and retardants. *FireDos*[®] is offering a solution for every foam application one can think of, for example in foam sprinkler systems, in foam spray-flooding systems, in fog-spraying systems, in fire-fighting trucks, as a mobile unit and in combination with “compressed-air-foam” (CAFs) systems.



(pict. 1) *FireDos*[®] FD1000/0,3-3-APP-F
 main water flow: 100-1000 l/min
 admixture rate: 0,3-3 % step less adjustable
 operating pressure: max. 16 bar
 installed in a HTLF 16 of the fire brigade of the town Ulm



(pict. 2) *FireDos*[®] FD6000/3-PP-S
 main water flow: 500-6000 l/min
 admixture rate: 3 % fixed
 operating pressure: max. 16 bar
 installed in a stationary fire-fighting system

The multitude of its characteristics turns *FireDos*[®] into a universally useable concept:

- *FireDos*[®] is powered by the extinguishing water flow only; no external energy has to be supplied by an electro or diesel engine for example.
- *FireDos*[®] is working proportional to the volume flow, which means it is dosing independent from varying volume flows or varying system pressures.
- *FireDos*[®] is working independent from variations in pressure, length and sizes of pipes and nozzles.
- *FireDos*[®] covers with its available versions a wide range of flows and admixture rates: flow rates 10 l/min through 20.000 l/min, admixture rates: 0,03 % through 6,0 % (other ranges on request).
- *FireDos*[®] is suitable for all common fire-fighting liquids regardless of their viscosity and consistency.
- *FireDos*[®] is a modular built system, which consists basically of a water-hydraulic motor driving a fire-fighting additive pump. The fire-fighting additive pumps are available with fixed, stepwise adjustable or step less (continuously) adjustable admixture rates.
- *FireDos*[®] is an almost maintenance-free system. It is easy to use and easy to install, also in case of retrofitting into an existing system or an existing vehicle.
- *FireDos*[®] offers the possibility to achieve a relation between minimum and maximum water flow of 1:100 and higher by using more than one system
- *FireDos*[®] is available for maximum operating pressures of 10 bar, 16 bar, 25 bar or 40 bar and for maximum operating temperature of 50 °C and 80 °C.
- *FireDos*[®] can be used for stationary and mobile applications as well as for applications in fire-fighting vehicles.
- *FireDos*[®] is approved by VdS (German society of indemnity insurances) in more than 10 unit types since June 1997 and accepted by FM in installations throughout Europe.
- *FireDos*[®] can be fitted with highly corrosion-resistant and saltwater-resistant materials for off-shore

applications in connection with seawater.

- **FireDos[®]** offers the possibility to change the additive storage container if it is empty without stopping operation of the unit.

Since the year 2000 a number of new FD - units have been introduced to the market to complement the range of available versions:

FireDos[®] units in compact version:

FireDos[®] units with step less adjustable admixture rate are for the smallest possible mounting space available in compact versions, offering all features of the standard version (see pict. 3). The flow direction through the hydraulic motor can be freely chosen, including a vertical flow direction. The foam agent pump is mounted on top of the gear and is driven by a toothed belt.

FireDos[®] FD250 and FD500:

The **FireDos[®]** FD250 has a volume flow range of 40 - 250 l/min and the **FireDos[®]** FD500 has a volume flow range of 50 - 500 l/min.

These unit sizes have been designed for smallest sized fire-fighting systems and for mounting in fire-fighting trucks and vehicles. The units are also available in pressure stages PN25 and PN40; hence they easily fit into the high pressure systems of a fire-fighting truck. These new series are available in all known equipment versions and admixture rates.

FireDos[®] FD1600:

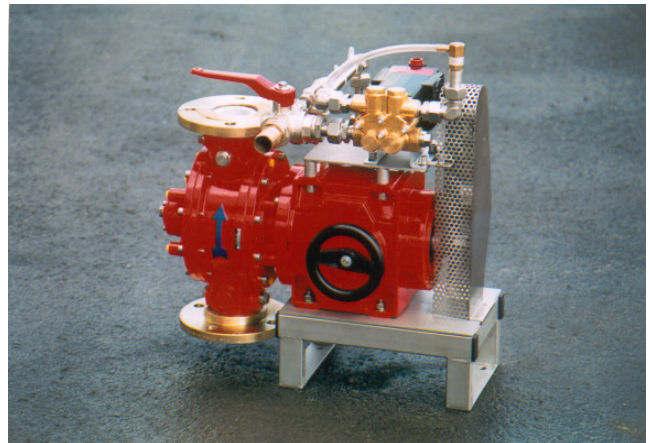
The series FD1600 covers a volume flow range of 150 - 1600 l/min and complements the product program between the unit sizes FD1000 and FD2500. All known admixture rates and equipment versions are available.

FireDos[®] FD8000, FD10000 and FD20000:

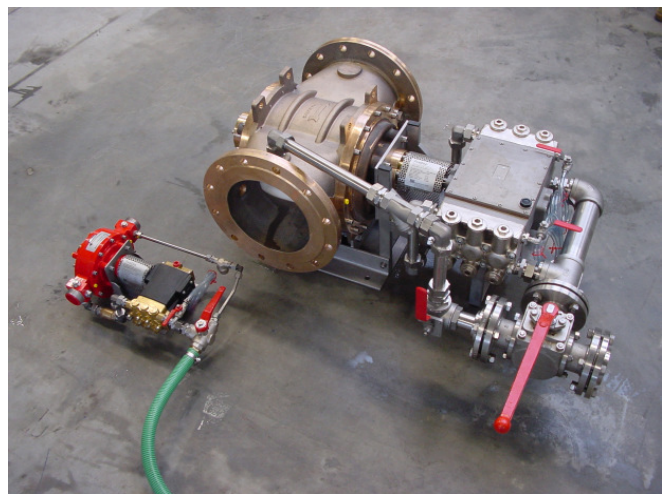
As an extension to the top range of the **FireDos[®]** product program the unit size FD20000 has been developed. The volume flow range is 800 - 20000 l/min.

Since the beginning of 2004 the newly developed series FD8000 for a volume flow range of 500 - 8000 l/min is replacing the so far available FD7500 offering a significantly lower pressure loss.

All three unit sizes are available with all known admixture rates and with nearly all equipment versions.



(pict. 3) **FireDos[®]** FD1000/0,1-1-APP-F compact
main water flow: 150-1000 l/min
admixture rate: 0,1-1 % step less adjustable
operating pressure: max. 16 bar



(pict. 4) **FireDos[®]** FD10000/3-PP-S seawater
main water flow: 500 - 10000 l/min
admixture rate: 3 % fixed
operating pressure: max. 16 bar
Unit in seawater-resistant bronze-version
FireDos[®] FD500/3-PP-S (lower left)
main water flow: 60 - 500 l/min
admixture rate: 3 % fixed
operating pressure: max. 16 bar