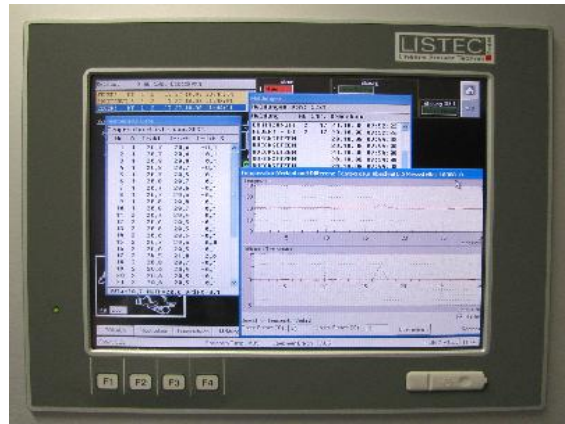


# DMU 6012

## Data Management Unit



The Data Management Unit **DMU 6012** is a data-logging and visualisation system, which logs temperature values and messages from a **LIST** sensor cable system periodically and displays this information in various graphical forms.

With **LISTgraph II**, an extensive software package, the temperature data of thousands of **LIST** sensors can be managed. Standard ports such as RS232 and Ethernet enables the integration with further systems.

The Data Management Unit is delivered as a 19"-sub-rack with 7 units height.

A touch screen monitor, software keyboard, USB port on the front side and four programmable function keys are standard.

As an option, further data interfaces, in-/output signals, uninterruptable power supply and others can be offered resp. project-specific provided.

### Specifications:

#### CPU

Transmeta Crusoe, 256 MB

#### Ports

2 x RS232;  
 1 x RS232/485;  
 1 x parallel (printer);  
 PS/2 mouse;  
 PS/2 keyboard;  
 1 x USB front side;  
 4 x USB back side;  
 10/100 Mb/s Ethernet (RJ 45);  
 TFT monitor (max. 1024 x 768 Pixel)

**Operating temperature**  
 +0°C ... +50°C

#### Power supply

24 V<sub>DC</sub>

#### Power consumption

max. 24 W

#### UPS

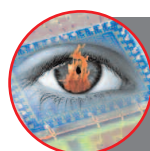
optional

#### Dimensions/ weight

19"-sub-rack, 7U / approx. 4,0 kg

#### Ordering information

**DMU 6008** 8" TFT-monitor  
**DMU 6012** 12" TFT-monitor  
**DMU 6015** 15" TFT-monitor  
 each in Touch-screen function.



# DMU 6000

## interface/protocol converter



The Data Management Unit DMU 6000 is a multi-tasking interface/protocol converter without monitor.

### Technische Daten:

<b>CPU</b> Transmeta Crusoe, 256 MB	<b>Power Supply</b> 24 V <sub>DC</sub>
<b>Interfaces:</b> 2 x RS232; 1 x RS232/485; 1 x parallel (printer); PS/2 mouse; PS/2 keyboard;  4 x USB back side; 10/100 Mb/s Ethernet (RJ 45);	<b>Power Consumption</b> max. 20 W UPS optional  <b>Dimensions/ weight</b> 19"-sub-rack, 7HE / approx. 2,5 kg
<b>Operating temperature</b> +0°C ... +50°C	<b>Ordering information</b> <b>DMU 6000</b> Interface/protocol Converter

