

SEVO 1230 Check Valves

78FP1.0, 78FP1.25, 78FP2.5, 78FP3.0

Utilizing 3M™ Novec™ 1230 Fire Protection Fluid

Description

Check Valves are used when two or more agent storage cylinders are manifolded together with one common discharge piping configuration. Their purpose is to prevent loss of agent in the event that any of the agent storage cylinders are not connected to the manifold at time of system discharge.

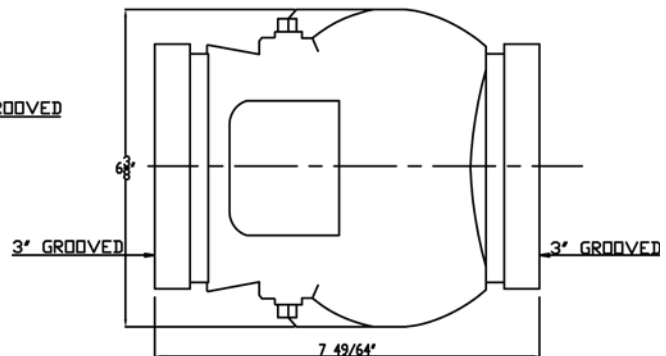
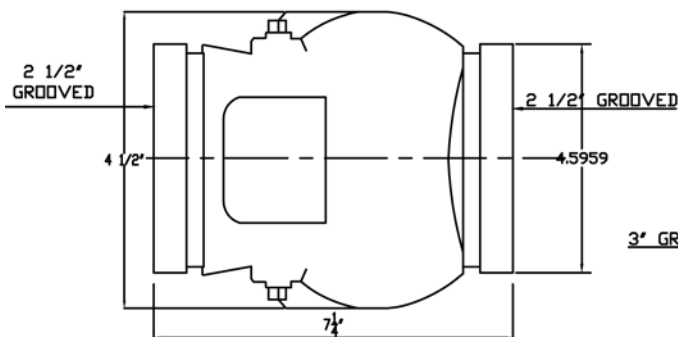
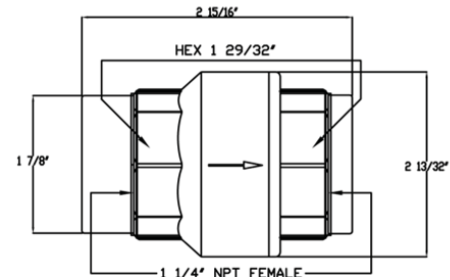
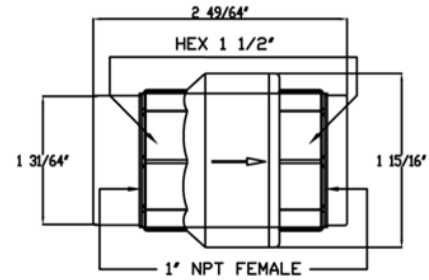
In a full open position the 78FP rubber faced swing clapper is held tightly against the valve body, out of the flow stream, to provide maximum flow area and prevention of clapper flutter. The clapper design produces quick, non-slam closure before flow reversal can occur, which provides a leak free sealing of back pressures as low as 1 psi (0.07 bar) equivalent to 28" water head. (Figure 2.11b)

Pressure Rating

1" through 3" 78FP Check Valves have a maximum working pressure of 500 psi (34.5 bar).

Installation

The 78FP UL/FM Check Valves may be installed vertically or horizontally. For the vertical direction, the flow direction must be upwards. In a horizontal installation the Hinge Pin is to be located on top. Proper installation and maintenance in accordance to Gruvlok specifications, as well as being in compliance with the applicable standards of the National Fire Protection Association.



FOR USE BY ARCHITECTS AND ENGINEERS

This page intentionally left blank

FOR USE BY ARCHITECTS AND ENGINEERS
