

GA Series Total Flooding Fire Extinguishing System

FIREBOY - XINTEX
Marine Safety Systems

INNOVATIVE PRE-ENGINEERED SYSTEM DESIGN
FOR ENGINE ROOM FROM 45.3 CUBIC METERS TO 85 CUBIC METERS

Product Description

- Each system includes twin extinguisher tanks, flexible braided stainless steel hosing, two overhead temperature sensors, fire resistant manual release cables, and an engine shutdown control.
- Four temperature sensors monitor engine room temperature 24 hours per day. When engine room temperature reaches 79°C (175°F) or 68°C (155°F), the system will discharge.
- Complete system and components custom fitted for each application.
- Exclusive, patent pending safety lock poppet valve that eliminates accidental discharge.
- Simple and less costly system installation compared to engineered systems – no third party certification required.
- Single cylinder systems available for engine room volumes of 17m³ to 42.5m³

DESCRIPTION OF COMPONENTS

Extinguisher Cylinders: Steel cylinders, DOT and FM approved for the GA Series working pressure and powder coated red for corrosion protection.

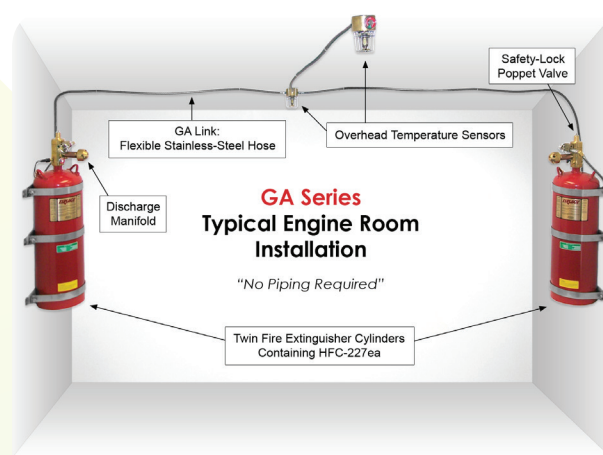
Safety Lock Poppet Valve: Patent pending system that prevents accidental discharge during shipping, warehouse handling and installation

GA Link: Flexible braided 316 stainless steel hosing with double check valve quick-connect couplings for easy attachment/re-attachment to the cylinder valve

Overhead Temperature Sensors: Mounted over the engines to monitor ambient engine room temperature; trigger system discharge upon reaching 79°C (175°F) or 68°C (155°F)

Manual Release Cables: High temperature, fire resistant manual release cables for manual system discharge; install one at each helm station and one at the engine room exit

Engine Shutdown Controls: Automatically shuts down engines, generators, blowers and dampers upon system discharge; 3, 5 or 8 circuit shutdowns available, 12VDC or 24/32VDC



Mounting Brackets: Stainless steel, extra heavy duty, vibration tested mounting brackets; three per cylinder

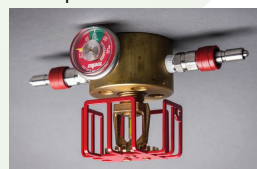
HFC-227ea (FM-200) or Novec 1230 Clean Agent: Both agents approved for normally occupied areas; worldwide accepted clean agent with zero ozone depleting potential.



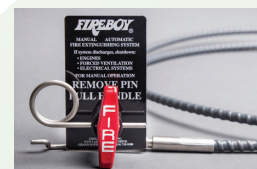
GA Link & Double check valve quick-connect



Discharge manifold



Overhead temperature sensor



High-temperature manual release discharge cable



Engine shutdown control



Dual release adapter

DATA SHEET

FORM NO. 41-MS-0066

ISSUE NO. A

DATE. 16/04/2015

APPROVALS

- USCG Approved
- FM Approved

SELECTING THE PROPERTY SYSTEM

- Calculate the gross engine room volume by measuring the length, width and height
- The gross volume MUST be used unless the boat manufacturer has attached a decal stating the volume of the fixed tanks to be deducted
- Use the “Maximum Volume Protected” column on the chart (below) to determine the model number needed
- Determine the lengths of stainless steel hose needed (GA Link)
- Select the lengths of Manual Release Cables needed by measuring from the control valve on the cylinder to the mounting point of the tee-handle, including the bends, for both helm station and exit door
- Choose an Engine Shutdown based on the number of circuits that need to be shutdown, 12VDC or 24/32VDC

MODEL NUMBER BASED ON VOLUME

Model Code	Agent Weight (per Cylinder)		Number of Cylinders	Diameter (mm)	Total Height (mm)	Maximum Volume Protected		Gross Weight (per Cylinder)		U.S Coast Guard Approval No.
	(Kgs)	(Lbs).				Cu. M	Cu. Ft	Kgs	Lbs	
GA-1600-227	15.7	34.6	2	254	665	45.3	1600	31.3	68.8	162.029/240/0
GA-1700-227	16.7	36.7	2	254	665	48.2	1700	32.2	70.9	162.029/240/0
GA-1800-227	17.7	38.9	2	254	665	51.0	1800	33.2	73.1	162.029/240/0
GA-1900-227	18.7	41.0	2	254	665	53.8	1900	34.2	75.2	162.029/240/0
GA-2000-227	19.6	43.2	2	254	665	56.7	2000	35.2	77.4	162.029/240/0
GA-2100-227	20.6	45.4	2	254	823	60.2	2100	39.1	85.9	162.029/240/0
GA-2200-227	21.6	47.5	2	254	823	62.3	2200	40.0	88.1	162.029/240/0
GA-2300-227	22.6	49.7	2	254	823	65.2	2300	41.0	90.2	162.029/240/0
GA-2400-227	23.6	51.8	2	254	823	68.0	2400	42.0	92.4	162.029/240/0
GA-2500-227	24.5	54.0	2	254	823	70.8	2500	43.0	94.6	162.029/240/0
GA-2600-227	25.5	56.2	2	254	823	73.70	2600	44.0	96.7	162.029/240/0
GA-2700-227	26.5	58.3	2	254	823	76.5	2700	45.0	98.9	162.029/240/0
GA-2800-227	27.5	60.5	2	254	823	79.3	2800	45.9	101.0	162.029/240/0
GA-2900-227	28.5	62.6	2	254	823	82.2	2900	46.9	103.2	162.029/240/0
GA-3000-227	29.5	64.8	2	254	823	85.0	3000	47.9	105.4	162.029/240/0

SYSTEM OPERATION

- Four temperature sensors, two located overhead and one on each fire extinguisher cylinder, continuously monitor ambient engine room temperature
- When the temperature reaches 79°C (175°F) or 68°C (155°F) at any of the sensors, both cylinders discharge within a fraction of a second of each other to completely flood the entire area with HFC-227 ea extinguishant
- System can be discharged manually by using up to three manual discharge cables
- The pressure switch on the extinguisher control valve will actuate the engine shutdown control and will shut down all engines, blowers and inlet dampers
- Once the GA system is completely installed, the system is activated by unlocking the safety lock poppet valve