

**SEVO MCV Series**  
**SEVO 1230 Modular Cylinder Valve Assembly**

**Description**

The MCV Series is an integrated clean agent fire suppression system equipped with an agent releasing control panel that is prewired and preprogrammed. The electric actuator, piezo alarm, horn/strobe, and key maintenance switch are prewired to the agent releasing control panel allowing for minimal remote devices to be wired to agent releasing control panel.

Each MCV series comes equipped with a SEVO 1230 Clean Agent System filled with 3M™ Novec™ 1230 Fire Protection Fluid. Systems are available with standard 360 psi (25 bar) or the new SEVO™ 1230 FORCE500™ at 500 psi (34.5 bar) storage pressure.

**Components Included (Frame Mounted):**

- Cylinder Valve Assembly
- 24 VDC Electric Solenoid
- Pre-Engineered Piping and Fittings
- Nozzle
- Cylinder Strap
- Modular Steel Frame
- Agent Release Control Panel
- 2 Batteries
- Audible Piezo
- Combination Horn/Strobe
- Photoelectric Detector (Field Install Required)
- Ionization Detector (Field Install Required)
- Exterior Strobe (Field Install Required)

**Key Features:**

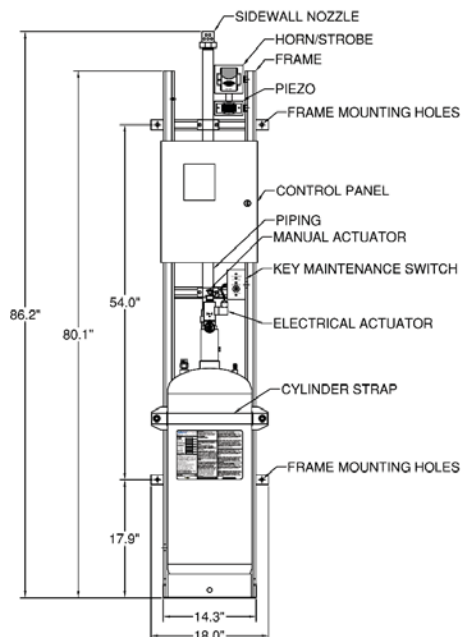
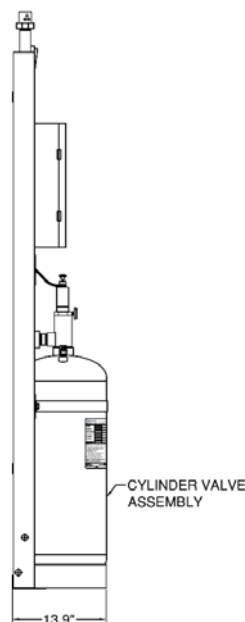
- Simple & Quick Installation
- No piping installation required
- Factory Programmed
- Available as Pre-Engineered or Engineered

**Optional Components:**

- Abort Station
- Exterior Strobes
- Remote Annunciator
- Heat Detectors
- Agent Releasing Control Panel Available:
  - Potter PFC-4410
  - Notifier RP2002

**Also Available:** SEVO Systems Technicians for system checkout & inspection.

Part Numbers	Cylinder Sizes	Listings/Approvals	
		360 PSI/25 Bar	500 PSI/34.5 Bar
MCV140069	40	UL/ULC	UL/FM
MCV140079	76	UL/ULC	UL/FM
MCV14817	164	UL/ULC	UL/FM
MCV140057	322	UL/ULC	UL/FM
MCV14813	601	UL/ULC	UL/FM



**FOR USE BY ARCHITECTS AND ENGINEERS**